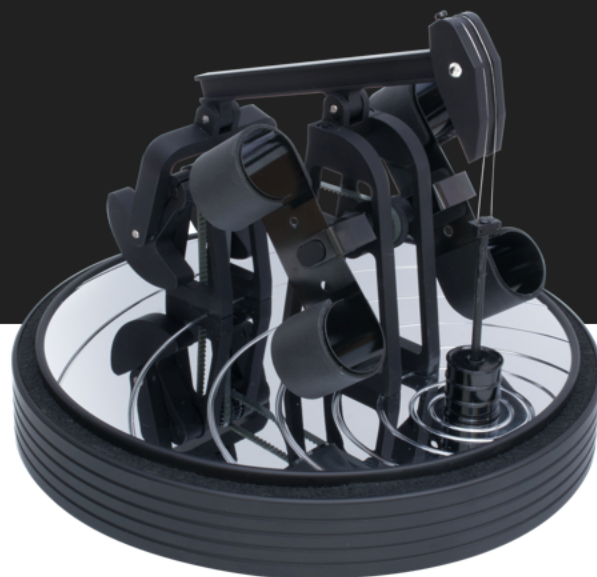


KUNSTWINDER

Specifications

Watch Winder Basics

We are proud to present Kunstwinder watch winders, which are individually crafted using patented technology and numbered within a limited production series. Each of our watch winders is protected with a 3-year, full warranty.



Watch Capacity

All watch winders in our collection, with the exception of Chronos, can simultaneously wind two watches. Chronos is a single watch winder.



Watch-mounting Springs

The watch-mounting springs adjust to fit any size watchband and are lined with protective rubber to prevent scratching.

Gear-motor

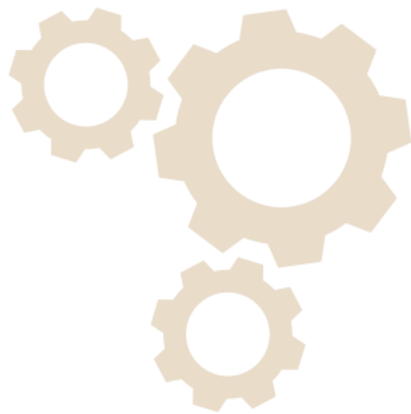
Watch winders run on a precise, noiseless, highly-reliable, Swiss brushless gear-motor.





Adaptor

Kunstwinder watch winders run on a universal 90-260 VAC adaptor, which is included in your purchase. A European plug adaptor is also included.



Full Warranty

We pride ourselves in the quality of watch winders in our collection. That's why each of our watch winders is protected with a 3-year, full warranty.

Patented Technology

The Kunstwinder watch winder technology was granted US patent 8,408,784.



KUNSTWINDER

Specifications

Rotation

While most watches require alternate direction of rotation at between 9 and 11 HTpD, we recommend consulting with your watch manufacturer before choosing the mode of operation.



Rate of Rotation

There are 24 pre-programmed, adjustable modes. The knob located at the base of the watch winder is used to select a required program. The numbers in the small window at the base show the current rotation rate in Hundred-Turns-per-Day (HTpD). The maximum HTpD is 16, or 1600 turns-per-day. The typical HTpD setting is between 9 and 11. We recommend using continuous ("C") mode for display purposes only.



Direction of Rotation

There are two preprogrammed modes: alternate direction of rotation (green LED) and single direction of rotation (amber LED). The mode can be selected by toggling the switch at the base of the watch winder, with the cycle repeating according to the chosen HTpD rate.



Alternate Direction

Alternate direction of rotation, which rotates the watches in one direction for 3 minutes, rests, and then rotates the watches in the opposite direction for 3 minutes, is the recommended mode because it evenly distributes wear of the watch mechanism.



Single Direction

Single direction of rotation, on the other hand, rotates the watches in one direction for six minutes, rests, and then rotates the watches in the same direction for another six minutes. Some brands are wound by rotation in one direction only. We recommend consulting with the watch manufacturer before choosing mode of operation.

KUNSTWINDER

Specifications

Reference Diagram

The program selection knobs, toggle switches, and other watch winder components are pictured below.

